

American Megatrends Inc. Product Catalog

Fall 2001

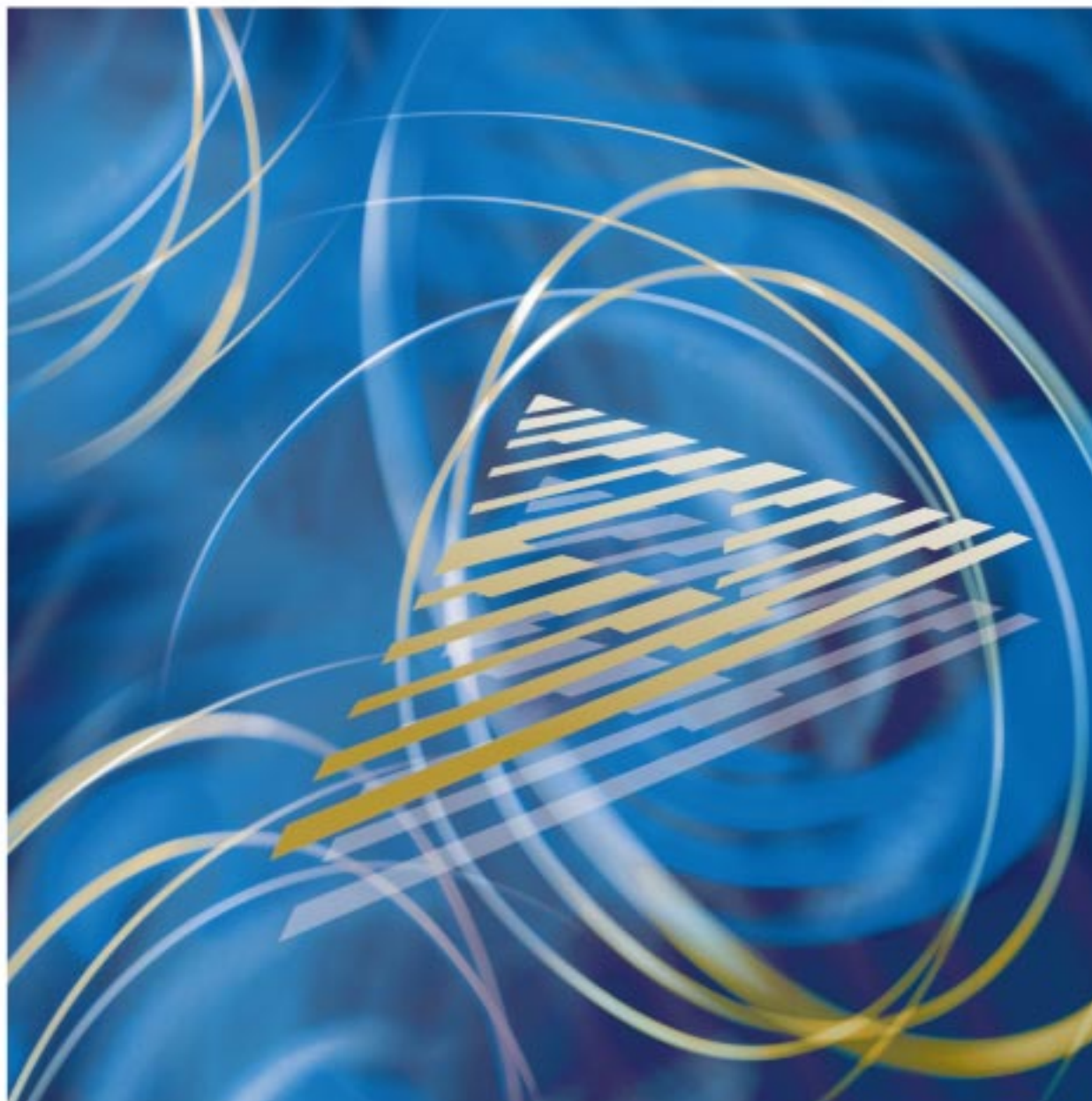


Table of Contents

Disk Subsystems	2-3
Storage Solutions	4
Motherboards	5
Remote Management	6
Utilities	7-8
BIOS	9-10
BIOS Utilities	11
Corporate Information	12

 **American
Megatrends**
www.ami.com

Disk Subsystems

Custom Chassis Solutions

AMI offers a variety of subsystems that enable integrators to customize their own storage solutions. AMI's StorTrends line of Just a Bunch of Disks (JBOD) with 1U, eight drive and 3U, 12 drive configurations allow it to continue to provide new mid-range products for the vital storage marketplace.

Designed for leading server integrators, AMI's StorTrends storage solution products provide an incredible competitive advantage with their low form factors, great price, superior performance and fault tolerant options with dual redundant power supplies and fan systems.

StorTrends™ 1108-J

1U chassis with eight hot swappable drive bays

- Eight hot swappable Ultra160 SCSI drive cradles
- Maximizes server density in standard 19" equipment racks
- Provides superior thermal management
- All drives mounted with the 'eZswap' fast and easy drive removal mechanism:
 - New drives are installed by simply inserting them straight out of the box -- without screws, rails or carrier assemblies -- and then latched in place with no mounting accessories or assembly. To replace a drive, the old drive is unlocked, removed and a new drive installed and locked in place in a matter of seconds.
- LCD and control buttons provide an alternate method for setup, maintenance and error notification
- LEDs provide status for system states including power, network and disk usage and a separate LED helps identify failed units within large rack-mounted environments
- Ultra160 compliant and Ultra320 ready IPMI backplanes (Series 904, 905)
- RAID compatible (RAID not included)
- Three hot swappable dual unit fans
- Two hot swappable load sharing power supplies
- 17" W x 1.7" H x 30" D
- Total weight with drives, slides, brackets & cables = 48.4 lbs, total weight without drives = 37.2 lbs and total weight without drives, slides, brackets = 32.5 lbs.



Drives pictured only show for clarity

StorTrends 1312-J

3U chassis with 12 hot swappable drive bays

- 12, 1 inch high hot swappable drive bays
- Available in standard two-channel or optional four-channel configurations
- LEDs indicate power, power failure, fan failure and temperature warning
- Ultra160 compliant and Ultra320 ready IPMI backplanes (Series 906)
- Support for third-party RAID controllers
- Two hot swappable dual unit fans
- Three hot swappable power supplies
- 16.63" W x 5.20" H x 19" D
- Weighs 50.4 pounds with drives, 34.8 pounds without drives



Why a JBOD? For optimal drive performance.

Created out of the need by vendors to produce a more productive external storage implementation, the JBOD externally attached storage solution can efficiently house numerous drives. JBOD solutions for storage devices incorporate power and cooling systems capable of supporting a large number of drives at the same time.

JBOD systems support hot swappable disk drives, allowing drives to be added and replaced without interrupting data storage systems or the server. A highly efficient solution for quick capacity, JBOD triumphs over the most demanding internal storage expansion requirements. As a dedicated storage solution, every component of a JBOD system that implements fault-tolerance adds to the overall integrity and availability of stored data.

Storage Backplane Products

Advanced backplanes are offered as part of AMI's custom-designed storage solutions. Backplanes are sold separately and require a custom-designed chassis. Mechanical dimensions and programmers' guide available under NDA to qualified customers.

Series 907

Supports two 1" or 1.6" Ultra160 (Ultra320 ready) SCSI drives

- Supports IPMI 0.9 and 1.0
- SCA-2 connectors to simplify insertion and removal of hard disk drives
- Hot swap drive support with individual power control to each slot
- Each drive has a connector for activity and status LED
- FET power control for each hard drive
- Fuse short protection and temperature management
- SAF-TE management and power connector
- Hard drive presence sensing and SCSI active termination
- Sideband signal connector IPMI I/F and other peripheral power control signals
- Activity and status LEDs for every slot

Series 906 (featured in the StorTrends 1312)

Six Ultra160 (Ultra320 ready) slots, single channel

- Supports IPMI 0.9 and 1.0
- Auto termination
- Clustering support
- Supports SAF-TE version 1.1
- Hot swap drive support with individual power control to each slot
- Asynchronous wide SAF-TE processor
- Activity and status LEDs for every slot
- Global LEDs for activity, failure and rebuild

Series 905 (featured in the StorTrends 1108)

Power/fan control backplane

- Backplane with power control and fan control
- No drives
- Power management for use in a 1U with the 904

Series 904 (featured in the StorTrends 1108)

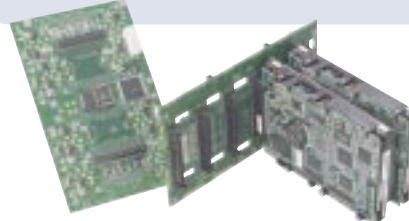
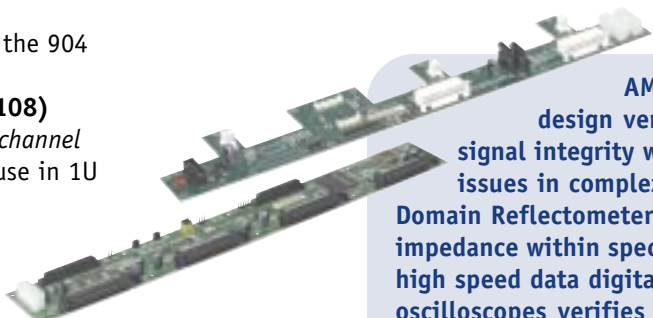
Four Ultra160 (Ultra320 ready) slots, single channel

- Horizontal (in-line) mounted drives for use in 1U chassis implementations
- Supports IPMI 0.9 and 1.0
- Auto termination
- Clustering support
- Supports SAF-TE version 1.1
- Hot swap drive support with individual power control to each slot
- Asynchronous wide SAF-TE processor
- Activity and status LEDs for every slot
- Global LEDs for activity, failure and rebuild



Building on its storage and motherboard expertise, AMI designs custom backplanes that maximize signal integrity, optimize artwork layout and support advanced clustering, auto-termination and isolation capabilities.

One of the most beneficial features to AMI's backplanes is Intelligent Platform Management Interface (IPMI) support for v0.9 and v1.0 that gives IT managers access to platform management information and control features, allowing more accurate predictions of hardware failures, hardware problem diagnoses and recovery action initiation.

AMI's expertise in design verification ensures signal integrity will not cause any issues in complex systems. Time Domain Reflectometer (TDR) verifies impedance within specifications and high speed data digital storage oscilloscopes verifies skew budgets and signal quality.

Storage Solutions
Cheat Sheet

StorTrends 1108-J	=	1U/8 Drive Ultra160 SCSI Redundant Hot Swap Drive Unit
StorTrends 1108-N	=	StorTrends 1108-J + Indium
StorTrends 1108-P	=	StorTrends 1108-N + StorTrends NAS Software
ServTrends 1100-N	=	Multi-Purpose Server Appliance Enclosed Around the Indium
ServTrends 1100-P	=	ServTrends 1100-N + StorTrends NAS Software
StorTrends 1312-J	=	3U/12 Drive Ultra160 SCSI Redundant Hot Swap Drive Unit
StorTrends 1312-N	=	StorTrends 1312-J + ServTrends 1100-N
StorTrends 1312-P	=	StorTrends 1312-N + ServTrends 1100-P

Storage Solutions
Cheat Sheet

Storage Solutions

AMI provides complete hardware and software storage solutions for JBOD, NAS and RAID enclosures designed by a single source. This includes AMI's BIOS, backplanes, motherboard, chassis and software that allows it to carefully address RAS (reliability, availability and serviceability), performance and usability.

The 1108 in a 1U Form Factor High-Density Server

The 42-inch high rack includes five StorTrends units. If each unit is populated with eight 73 GB drives, the capacity of the rack shown with five units would be 2.85 Tera Bytes (TB). If all 24 units were populated, the rack's combined capacity would be 13.69 TB.



1U, 8 drives

StorTrends 1108-N

1U with eight Ultra160 compliant, Ultra320 ready hot swappable drive bays includes AMI's Indium embedded controller

StorTrends 1108-P

1U with eight Ultra160 compliant, Ultra320 ready hot swappable drive bays includes AMI's Indium and custom-designed StorTrends NAS software version 1.0

3U, 12 drives

StorTrends 1312-N

3U with 12 Ultra160 compliant, Ultra320 ready hot swappable drive bays includes AMI's Indium appliance controller

StorTrends 1312-P

3U with 12 Ultra160 compliant, Ultra320 ready hot swappable drive bays includes AMI's ServTrends 1100 and custom-designed StorTrends NAS software version 1.0



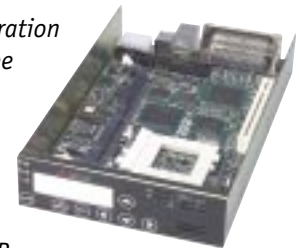
Sled chassis with Embedded Controller

ServTrends™ 1100-N

Sled chassis enclosed around the Indium appliance controller that can be used individually for integration into a user's own NAS device, CD server, CD-ROM tower, CD/jukebox or optical disk library or it can be used to power AMI's StorTrends 1312-N or StorTrends 1312-P

ServTrends 1100-P

Sled chassis enclosed around the Indium appliance controller with AMI's StorTrends NAS software version 1.0 that can be used individually for integration into a user's own NAS device, CD server, CD-ROM tower, CD/jukebox or optical disk library or it can be used to power AMI's StorTrends 1312-P



NAS software

AMI StorTrends NAS Software Version 1.0 (not sold separately)

- Disk Quota (user based)
- Based on FreeBSD and ideal for AMI's Indium embedded controller
- AMI software resides on a network upgradable flash memory device, leaving all hard drives 100 percent available for user data
- Complete configuration and management via web browser
- Error logging/notification via email or pagers
- Industry standard software used throughout the design to allow full network interoperability. TCP/IP, DHCP, DNS, NTP, SMTP, SNMP and RAID 0, 1, 5
- Client support for SMB/CIFS for Microsoft and NFS for Unix and Linux
- NDMP support for back-up operations



Motherboards


The tightly integrated Indium and Olympus II motherboards combine AMI's expertise in board, firmware and operating system environments. Their architecture provides a scalable, high-performance platform that addresses many applications, including NAS, web servers and other embedded environments. AMI's family of single-processor, embedded motherboards enable customers to meet their time-to-market requirements in the growing embedded and server appliance market.

AMI motherboards' robust feature sets and advanced designs provide systems integrators and value added resellers (VARs) with the ideal motherboard solution for ISPs and telephony applications, as well as high-end imaging applications including AutoCAD, professional desktop publishing and video editing.

Indium (Series 803)

Small form factor server appliance motherboard/NAS controller

- Specially designed for server appliances, the Indium maximizes the price/performance equation for 1U systems, hardware health monitoring for temperature, voltages and fan speeds
- Intel® 810E chipset; provides flexibility to support all Intel processors including those with the 133, 100 or 66 MHz system bus
- Supports single Socket 370 Celeron/Pentium® III CPU
- One DIMM supports up to 256 MB 100 MHz SDRAM
- Dual on-board 10/100 Mbit LAN and USB support
- Dual on-board USB support
- Dual on-board Ultra2 LVD SCSI channels
- Advanced hardware health monitoring
- Small Footprint: 5.25" x 8.5"
- Ideal for 1U, 2U or 3U chassis environments



AMI, the well-known manufacturer of BIOS firmware for PCs, has released a new embedded Linux system. Dubbed Indium, the system is the size of a half-height 5.25-inch drive bay. The small form factor makes it ideal for 1U servers, making it possible to have multiple servers inside a single 1U height. When you compare the footprint size of the board to the 1U 19-inch rackmount servers, you'll notice that you could probably fit four or six Indiums in there.

- ITworld.com

Olympus II (Series 821)

Entry-level, all-in-one small form factor single processor embedded motherboard

- Optimized for use in a wide range of server and workstation applications
- Low-cost, flexible and stable board, ideal for home and business users requiring the most up-to-date features
- Ideal solution for compatibility and quality
- Intel 815E chipset; optimizes flexibility and stability in Intel Pentium III processor-based PCs
- Supports single Socket 370 Intel Celeron/Pentium III Coppermine CPU
- Dual channel ATA/100
- Up to 133 MHz FSB
- Three PCI slots
- One AGP slot
- 512 MB PC133 SDRAM
- On-board 10/100 LAN
- On-board USB support



Based on its unrivaled success in the BIOS industry, AMI motherboards have garnered a reputation as the finest and most feature-packed motherboards on the market. Its motherboard solutions feature the richest architecture and full hardware health monitoring capabilities, allowing integrators the most flexibility to tailor systems to customer requirements.

As greater value is placed on storing data more efficiently, managing information better across a network and providing fast reliable access, server manufacturers are scrambling to develop appliances and applications to meet the growing demand for inexpensive yet robust server appliance solutions. With AMI's Indium server appliance motherboard, manufacturers will meet and/or exceed their time-to-market requirements.

Remote Management

AMI's remote server management tools enable companies to reduce total cost of ownership (TCO) by allowing complete server management, system health monitoring, event notification and system recovery from virtually anywhere in the world. To further meet today's demand for expanded reach of control over complex network devices, AMI offers a line of hardware utility products.

MegaRAC empowers the user with remote access to the server in the event of a failure or power outage. It provides crucial server diagnostic information to help identify the root cause of the down condition. With the MegaRAC's ability to provide redirection of the server console, the user can take full remote command of the server. The user can remotely control the server from booting the hardware through loading the OS and performing required administrative functions. MegaRAC can also boot the server to a remote floppy drive, enabling system diagnostics to be performed.

MegaRAC reduces server downtime through remote management. As it facilitates configuration and debugging from anywhere in the world, labor and personnel costs can be minimized. It helps improve the network support team's productivity, as they are no longer required to remain on-site.

MegaRAC® (Series 780)

Fully integrated PCI controller that enables companies with complete server management from anywhere and on-board battery backup/external power supply for 24/7 accessibility

- Server health monitoring
- Administrator notification of critical events via pager, email, SNMP trap and management station
- Full text/graphics console redirection for complete remote server control
- Virtual (remote) boot that allows remote maintenance and diagnostics capabilities
- Auto server recovery to reduce server downtime
- Out-of-band FTP support for fixing corrupted files
- Ethernet and modem support for out-of-band connectivity
- Enables remote server management and monitoring

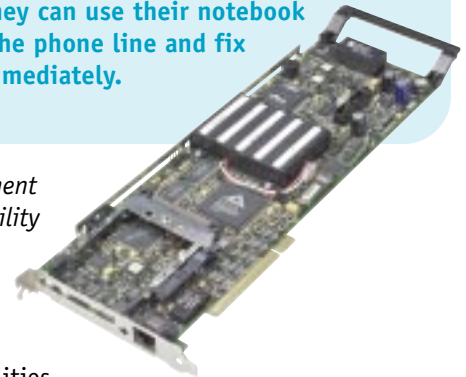
100% Remote Access

Specially designed for a server, AMI's MegaRAC is a high performance remote access controller. It's not an ordinary modem controller. It uses a special hardware design feature rich utility and software, and allows authorized users remote access to the server through Ethernet or LAN. It also displays all the information of the server on the remote console. If the server is down, users can easily do a hard reset, enter to SCSI or RAID BIOS and give disconnect instructions and set CMOS data. After users enter into the operating system, they can use it like they are sitting in front of the server.

Ingenious Alert Notification

AMI's MegaRAC uses a high performance i960 processor. The board has I2C logic, which allows users to read all the questionable data from the server's motherboard. If there is a modem installed, it will automatically page the supervisor when a problem occurs, even when a supervisor is far away from the server. As soon as they get the notification, they can use their notebook to connect to the phone line and fix the problem immediately.

- PCWeekly



MegaRAC Remote Access Companion software promotes easy integration with other management products, adding value to the user's overall management investment



Address book



Event log



System health



System information

Utilities

AMI's software family was developed with the needs of the system administrator in mind; and is dedicated to lowering costs associated with production quality, technical support, deployed systems' management and system maintenance.

AMIDiag[®] 6.13

AMIDiag 6.13 offers the most robust feature set of any DOS diagnostic software on the market. AMIDiag 6.13 provides the most advanced system information and computer diagnostics available today.

- Compatible with DOS, Windows 95/98/ME
- Support for built-in video/audio in Intel 810/815
- Latest CPU support including Intel, AMD and Cyrix with virtually no speed limitations
- SSE2 Specific Test
- Multiprocessor diagnostic
- Update support for all test modules and support for non-legacy IDE: HDD, CD, DVD, ATAPI
- Hard disk tests for up to UDMA 100
- USB mass storage device support and multiple Ethernet support
- Enhanced floppy disk diagnostic, SMBUS (including SPD SDRAM information) and ACPI tests
- Memory tests
- Fast tests for several devices and easy installation procedure
- Support for Intel/VIA/ServerWorks chipsets

AMIDiag for Linux, a Native Linux Application

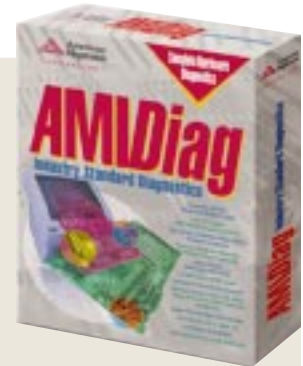
AMIDiag for Linux supports all major distributions of Linux including those from RedHat, SuSE and Mandrake. AMIDiag for Linux provides structured diagnostics that make it an ideal solution for embedded Linux applications.

- 100 percent Native Linux application
- Comprehensive system information
- Supports most 2.4.x based Linux distributions
- Extensive processor and memory diagnostics
- Extensive mass storage device testing (including hard drive, CD/DVD-ROM, etc.)

AMIDiag for Windows

AMIDiag for Windows offers the most comprehensive hardware diagnostic and system information for the Windows environment

- Compatible with Windows 95/98/ME/NT/2000
- System information and diagnostics for major components
- Trouble Ticket[™] in HTML format and modules based on ATL/COM
- Customizable components with documentation
- Add third party diagnostic/ information modules and interactive diagnostics
- Diagnostics for Human Interface Devices including mouse, keyboard, video and audio
- Multilevel Diagnostics - Basic and Extended



AMIDiag tests every hardware subsystem, from PCI and ISA adapter cards to AGP and USB devices, providing detailed reports on any problems it finds. Overall rating 5/5.
- *PC Magazine*

"AMIDiag Suite is one of the most useful tools on the market."
- *Bob Williams, The Computer Update Show KITZ 1400*

AMIDiag remains one of the most comprehensive diagnostics utilities we've ever seen. Probably the most comprehensive, in fact.
- *IT Reviews*

It takes a great utility to provide the information to pinpoint system problems. American Megatrends' AMIDiag is just such a utility, and could prove valuable to any office or home network that is in constant use and needs regular diagnosis.
- *8wire Magazine*



AMIDiag for Windows

AMIDdiag for EFI, 32-Bit and 64-Bit EFI Application

AMIDdiag for EFI is the only hardware diagnostic solution available for the Extensible Firmware Interface. As one of the major extensions to the 64-bit firmware, EFI provides a common interface solution. AMIDdiag for EFI offers complete hardware testing for all system components and peripherals.

- Bootable from any storage media device
- Modularity offers OEM customization of Diagnostic Modules
- System information and quick test mode and interactive/non-interactive
- Condensed scripted, scripted, batch mode, single/multi cycles batch testing
- Test result logging on a file, COM: or LPT: port and customizable log file
- Network Heart-Beat support
- Test status reporting

PC Defender™

PC Defender is a DOS-based hardware diagnostic software product targeted for end users. It has an easy and intuitive graphical user interface (GUI) with mouse support. Internally PC Defender is powered by the same diagnostic modules as found in the award winning AMIDdiag. It is organized to offer a completely automatic test screening of the system hardware (Basic Test) as well as a more user controllable test session (Advanced Test).

- Intuitive Graphical User Interface
- Test Wizard for problem resolution
- Allows running from RAM drive when booted from floppy
- Configuration History
- Report Generation



AMI Server Management Software

Revolutionary server management software is a Java-based application that offers scalability and simplification of deployment, configuration and maintenance of storage devices. Based on the J2EE platform, AMI Server Management Software has a multi-tier architecture.

- Architecture:
 - Back-end server: keeps the managed objects and database in sync and implements the management policies
 - Front-end server: handles client sessions and views
 - Client: Web browser used as User Interface
 - Agent: The server accesses the managed devices through standard protocols like SNMP
- Robust feature set:
 - Active Discovery
 - Topology Mapping
 - Configuration Management
 - Hardware Health Monitoring
 - Fault Management
 - Performance Monitoring
 - Back-up

The first customer shipment of AMI Server Management Software is scheduled for Q1'02.

BIOS

AMIBIOS® offers the most advanced and reliable system software across market segments including embedded, server, desktop, industrial PCs and portable applications. AMIBIOS incorporates the highest levels of customization and engineering, allowing the flexibility and performance required to compete in the industry. AMIBIOS is a cost-effective solution for customers on the front-end and provides ROI by reducing time to market.

AMIBIOS 8

AMIBIOS8 offers scalable BIOS solutions from Embedded Computing Platforms to Mission Critical Servers. AMIBIOS8 offers a revolutionary Windows-based development environment that dramatically reduces the amount of time and engineering resources required to build an OEM customized BIOS solution. AMIBIOS8 ships with built-in high-end features such as Integrated Debugger, Remote Manageability and Configurable IO Subsystem, etc. in addition to all industry standard features such as ACPI and USB.



BIOS architecture enhancements

- Table Driven POST
- Single Link Architecture BIOS
- Modular BIOS components
- Separation of NorthBridge and SouthBridge chipset code
- Support for Legacy Free platforms

Support for the latest industry standards, features and technology

- Boot to USB mass storage devices
- ACPI 2.0
- Headless Operation

Visual Integrated Development Environment for Microsoft Windows

- Project management including Tree Organization and Source Control
- Built-in Editor with Context Sensitive Help
- Graphical Representation of PCI IRQ Routing
- Simplified directory structure organized by component type

Integrated Debugger with Source-level Debug capabilities

CPU Support

AMIBIOS8 supports all major x86 compatible processors including the latest technological advances

AMIBIOS8's reliable and enhanced modular architecture make it an ideal solution for various industry segments such as consumer electronics, industrial PCs, telecommunication servers, web access devices and Internet/appliance servers. The scalable architecture of AMIBIOS8 is the perfect cross segment solution for OEMs targeting multiple market segments.

AMIBIOS Desktop Core 7.0

The highly advanced AMIBIOS Desktop offers the latest BIOS functions such as extensive power management, state-of-the-art OEM utilities and portability to all CPUs and Chipsets.

- ACPI 1.0
- SMBIOS 2.3.1
- Legacy USB support
- Fast POST
- Silent boot support with OEM customizable logo
- PCI/PnP support
- Secure boot
- BIOS Boot Specification (BBS) 1.01
- Wired for Management (WfM) 2.0
- PC 2001 compliant



AMIBIOS Desktop, Mobile and Server support:

- Leading chipsets and processors
- Symmetrical flash, RAMBUS and enhanced GPNV
- Post Memory Manager (PMM)
- Enhanced Disk Drive (EDD) 3.0

AMIBIOS Mobile Core 7.0

AMIBIOS Mobile is designed to exceed the demands of today's notebooks and incorporate tomorrow's technologies. With features such as Smart Battery[™], AMIBIOS Mobile is designed to help dramatically reduce battery consumption.

- Support for the latest mobile processors
- Hot key support
- ACPI 1.0b support, including S4BIOS
- Advanced Power Management (APM) support
- Multi-level password protection
- CD boot recovery and secure boot
- LS-120, MO, iomega[®] Zip[™], DVD and CD-ROM support
- Custom error management and custom LCD panel support
- SMBus support
- Legacy-free ready and advanced IDE features



AMIBIOS Server Core 7.0

The modular and fully-featured AMIBIOS Server 2000 exceeds our customers' most demanding needs in the highly competitive server and workstation market.

- ACPI ready
- SMBIOS 2.3.1 compliant
- Serial bus and PCI/PnP support
- Multiple APIC mode
- BBS and CD boot recovery
- Complete tools and utilities support
- Silent boot support with custom logo
- Hardware health monitoring and WfM 2.0
- Quick boot support and secure boot
- Defective DIMM detection and remapping
- Hot plug PCI support
- Headless operation, including console redirection



Enterprise64 BIOS

AMI's Itanium Processor Family (IPF) BIOS offers revolutionary server system software solution for 64-bit Systems. Enterprise64 BIOS complies with the latest IPF industry standards and guidelines such as DIG64, EFI, ACPI and Hot-Plug PCI. Enterprise64 BIOS's flexible architecture allows OEM differentiation and customizations.

- 64-bit PCI, Legacy USB and SMBus support
- ACPI 2.0 and SMBIOS 2.3.1 compliant
- Quick boot and Flexboot support
- Silent boot support with OEM's logo
- Advanced boot device options
- Hot plug PCI and symmetrical flash support

AMI released (IA-64) BIOS, a server firmware solution for 64-bit systems that includes hardware health monitoring, ACPI, SMBIOS 2.3.1, multiple APIC mode support, remote management and 64-bit PCI support. Also included in the system is a built-in diagnostic program, Merge64 and Integrated Debugger developer tools. This product allows OEM differentiation and customization and a smooth transition to future IA-64 and x86-64 processors.

- Communications and Networking Magazine

BIOS Utilities

- Built-in IPF diagnostics
- Developer tools include Merge64 and Integrated Debugger64™

American Megatrends offers cutting-edge BIOS utilities including AMI's Integrated Debugger, a BIOS-side debug component, and AMIKey Recovery, a series of services that offer a cost-effective means of computer system recovery.

Integrated Debugger™

Integrated Debugger is a BIOS kernel debug utility designed to provide an integrated debug environment for AMIBIOS. The BIOS-side debug component works with the Host-side debug application over a selected interface to allow users to perform various debugging functions. Integrated Debugger is a Windows-based GUI application. Integrated Debugger is supported under Microsoft Windows 95/98/ME, Windows NT 4.0 and Windows 2000.

Integrated Debugger features include:

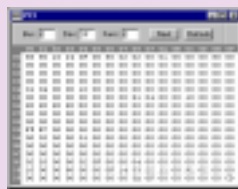
- Host/Target configuration
 - AMI's Integrated Debugger uses a flexible host/target configuration
- Multi-Function Windows Host
 - Powerful application gives developers functionality similar to hardware-based development tools
- Source Code Integration
 - AMIBIOS projects utilizing the integrated debugger target construct a Debug Information (DBI) file at build time. This allows AMI's Windows-based GUI to debug at the source level.
- Complete Modularity
 - The AMIBIOS debug target is completely modular, making it easy to include in any project. AMIBIOS8 projects import an eModule to enable debug capabilities. After system debugging is complete, the module is removed



AMI's Integrated Debugger offers a Windows-based GUI with powerful BIOS debug capabilities. Integrated Debugger can be added to AMIBIOS8, AMIBIOS Core 7.0 and Enterprise64 projects with ease.



Integrated Debugger



PCI View



Memory Debug View



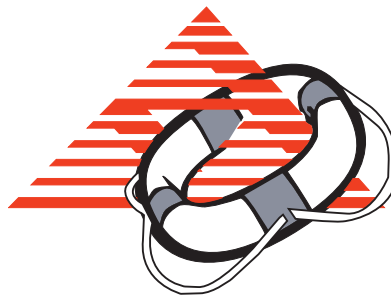
Disassembly View

AMIKey Recovery™

AMIKey Recovery is a BIOS utility designed to handle computer system recovery. In case of a "disaster" situation, AMIKey Recovery allows the user to reload the system hard disk, scan for viruses and run comprehensive hardware diagnostics. The menu for launching these services is provided in the AMIBIOS, while the services are stored on a hidden partition.

AMIKey Recovery includes the following services:

- Partition recovery service
- AMIDdiag for EFI (32-bit)
- BIOS flash service with network support
- Third-party utilities (provided by OEM)



AMI Corporate Headquarters:

6145-F Northbelt Parkway
Norcross, GA 30071-2976
Phone: 770-246-8600 or 800-828-9264
www.ami.com

AMI International Offices:

Germany: [49]89-9699-9510 www.ami.de
Japan: [81]3-5812-0020 www.amij.com
Taiwan: [886]2-2716-0036 www.ami.com/tw
Korea: [82]2-569-5689

About American Megatrends Inc.

American Megatrends Inc. (AMI) -- the leader in storage and computing innovations worldwide -- creates and manufactures the key hardware and software solutions for the global computer marketplace. AMI provides the highest quality and compatibility necessary to build today's advanced computing systems.

Established by S. Shankar in 1985, AMI's mission is to design state-of-the-art computer solutions and develop advanced technology for the best computing solutions in the world.

AMI's extensive product line includes BIOS, storage solutions, server appliances, motherboards, diagnostic utilities and remote assistants. With these product groups, AMI is uniquely positioned to provide all of the fundamental components necessary to offer complete system performance, manageability and availability for today's enterprise computing requirements. AMI is the only company in the industry today offering all of these core technologies.

After AMI contracted its first customer in 1985, it began to build a high-caliber reputation throughout the computer industry. In 1991, AMIBIOS® was named the number one BIOS in the world and by 1995, AMI's products were in over half of the computers in the world.

By 1995, AMI had become well-known for its RAID expertise and was named the number one third-party host-based RAID controller manufacturer in the world by GartnerGroup's Dataquest. With AMI's growing reputation as a storage provider in the industry, LSI Logic made AMI an offer to purchase its RAID division. In August 2001, AMI sold its RAID assets, including its MegaRAID line to LSI Logic. This sale will allow AMI to expand and develop its new StorTrends storage solution line of NAS and JBOD products. With its new product offering, AMI hopes to once again become the leader in the storage market.

With its ISO 9002 certification, AMI customers receive the highest quality products the first time, every time. AMI recognizes the increased requirements to reduce total cost of ownership (TCO) from notebooks to servers, and provides a line of software and hardware utilities and diagnostics that support this effort. AMI continues to succeed in this highly competitive marketplace by bringing new products to market with its advanced technology and designs, and is recognized each year by these efforts with numerous awards and contracts.

Headquartered in Atlanta, and with offices around the world, AMI offers unmatched service and support. More than 60 percent of AMI's employees contribute in an engineering capacity and provide customers with unrivaled hardware and software design services.

"AMI's customers are able to maintain market leadership status, along with the highest standards of quality and dependability. Our highest priority is ensuring customer satisfaction. To meet our goal, a project is not complete at AMI unless the customers' needs have been met above and beyond their expectations."

- S. Shankar, AMI President, Founder and CEO